

# Empire Collection

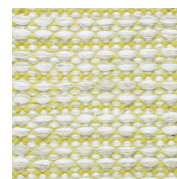
Horatio hand woven wool and tencel carpeting



Petal



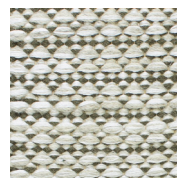
Sea Salt



Lichen



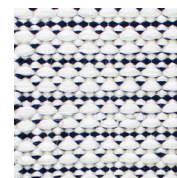
Turmeric



Olive



Lake



Navy



Salt & Pepper

## Technical Specifications

Content:	90% wool / 10% tencel
Construction:	hand woven
Type:	flatweave with tencel accent threads
Backing:	none
Traffic:	residential
Pile Height:	3/8" nom.
Weight:	11 ox./sf. nom.
Max width:	16'-4"
Max length:	60'-0"
Pattern repeat:	.75" wide x .875" wide
Flammability:	(Currently being tested)

Variations in size +/- 5% are inherent to hand woven products.  
Dyelot variations are subject to occur in handmade products.

Distributed exclusively by:  
Aronson's Floor Covering  
135 West 17th Street New York, NY 10011  
T +1 212 243 4993 F +1 212 675 5939

[empirecollectionrugs.com](http://empirecollectionrugs.com)