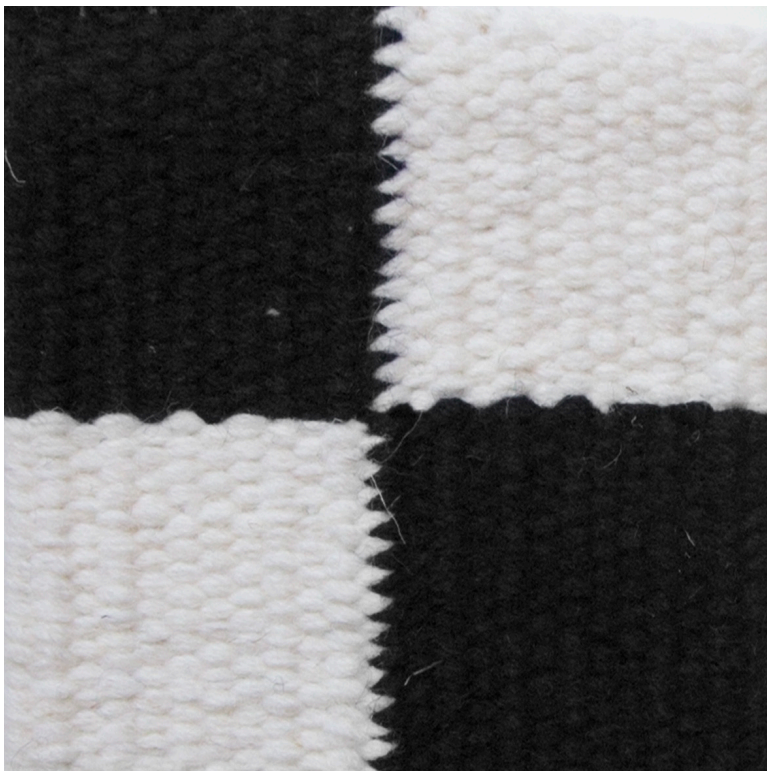
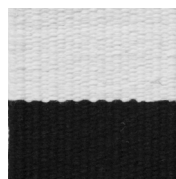


# Empire Collection

Patterns hand woven wool carpeting



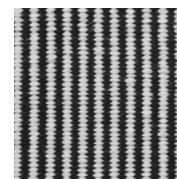
West Eleventh  
Stripe A



West Eleventh  
Stripe B



West Eleventh  
Stripe C



West Eleventh  
Stripe D



Madison



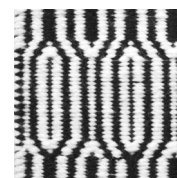
Waverly



Five Points



Rose Hill



Rockefeller



Park Slope

## Technical Specifications

|                 |                                |
|-----------------|--------------------------------|
| Content:        | 100% wool                      |
| Construction:   | hand woven                     |
| Type:           | flatweave                      |
| Variation:      | ten styles                     |
| Backing:        | none                           |
| Traffic:        | residential & light commercial |
| Pile Height:    | 5/16" nom.                     |
| Weight:         | 11 oz/sf nom.                  |
| Max width:      | 16'-4"                         |
| Max length:     | 60'-0"                         |
| Pattern repeat: | contact your Project Manager   |
| Flammability:   | (Currently being tested)       |

Variations in size +/- 5% are inherent to hand woven products.  
Dyelot variations are subject to occur in handmade products.

Distributed exclusively by:  
Aronson's Floor Covering  
135 West 17th Street New York, NY 10011  
T +1 212 243 4993 F +1 212 675 5939