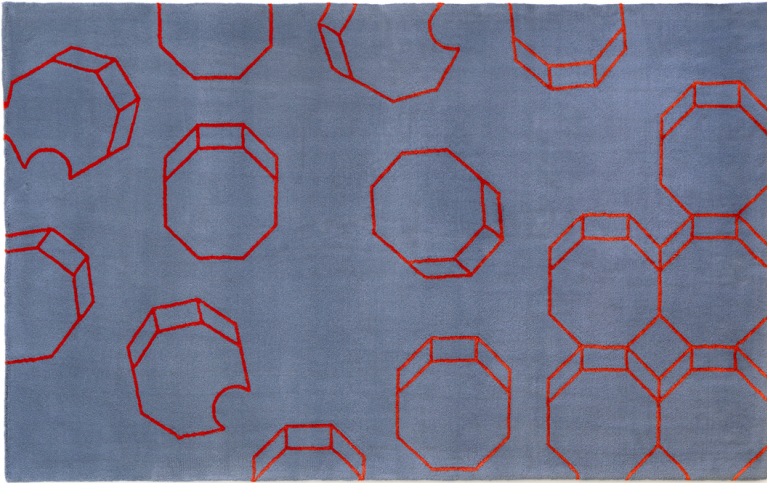


TriBeCa hand tufted wool and tencel carpeting



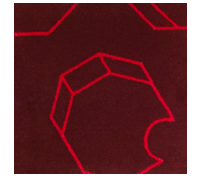
Moody Blue



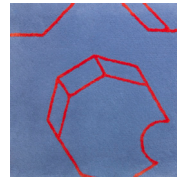
Dark Blue



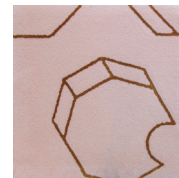
Emerald



Deep Red



Moody Blue



Blush

#### Technical Specifications

Content:	90% wool / 10% tencel
Construction:	hand tufted
Type:	cut pile
Backing:	latex
Traffic:	residential & commercial
Pile Height:	1/2" nom.
Weight:	18 oz/sf nom.
Max width:	14'-4"
Max length:	30'-0"
Pattern repeat:	n/a
Flammability:	(Currently being tested)
Design:	Copyright 2018, Ghislaine Viñas
Colorways:	Five, all designs are customizable in color & scale
Standard size(s):	6'-0" x 9'-0" 9'-0" x 12'-0" 6'-0" round 9'-0" round

Variations in size +/- 3% are inherent to hand woven products.  
Dyelot variations are subject to occur in handmade products.