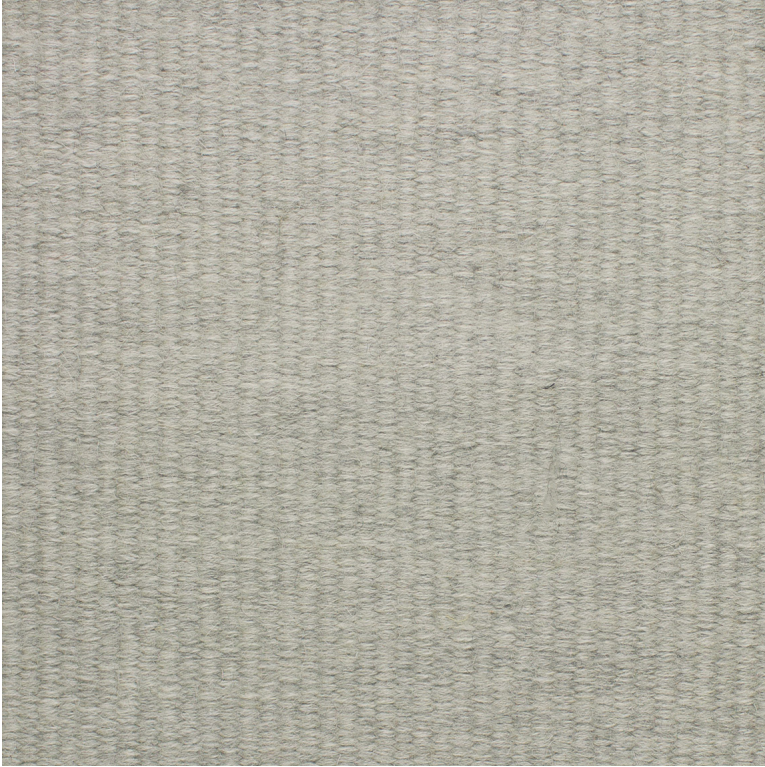


# Bedford

hand woven, alpaca



Frost



Soda



Frost



Thunder



Creme



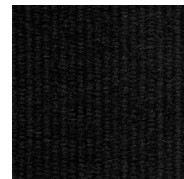
Latte



Malt



Mercury



Coal

## Technical Specifications:

|                 |   |
|-----------------|---|
| Content:        | 100% undyed alpaca yarn   |
| Construction:   | Hand woven  |
| Type:           | Flatweave   |
| Backing:        | None  |
| Traffic:        | Light commercial and residential<br>If castor chairs are used, this carpet should be protected locally with chair mats. |
| Pile Height:    | 5/16" nom.  |
| Weight:         | 11 oz/sf nom.   |
| Max width:      | 16'-4"  |
| Max length:     | n/a, Ribs parallel to the length  |
| Pattern repeat: | None  |
| Testing:        | Passes Pill Test for flammability, FF-170   |
| Made in:        | Portugal  |

Variations in size +/- 5% are inherent to hand woven products.  
Dyelot variations may occur.