

Sugar Hill

hand tufted, tencel



Pearl

Technical Specifications:

Content:	100% tencel
Construction:	Hand tufted
Type:	Tencel shag pile
Backing:	Polyester
Traffic:	Light commercial and residential If castor chairs are used, this carpet should be protected locally with chair mats.
Pile Height:	1.75" nom
Weight:	22 oz/sf nom.
Max width:	24'-6"
Max length:	32'-9"
Pattern repeat:	None
Made in:	Portugal

Variations in size +/- 2% are inherent to hand tufted products.
Dyelot variations may occur.



Pearl



Natural



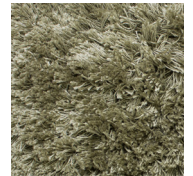
Sandalwood



Cumulus



Cliff



Flagstone



Greige



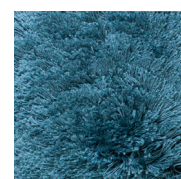
Pewter



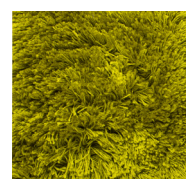
Char



Pale Sky



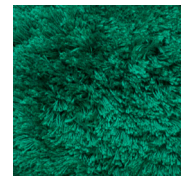
Waterfall



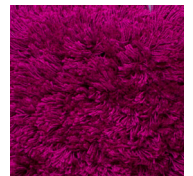
Old Gold



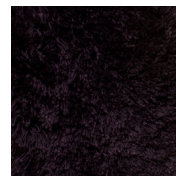
Marigold



Emerald



Begonia



Dark Plum