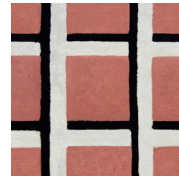
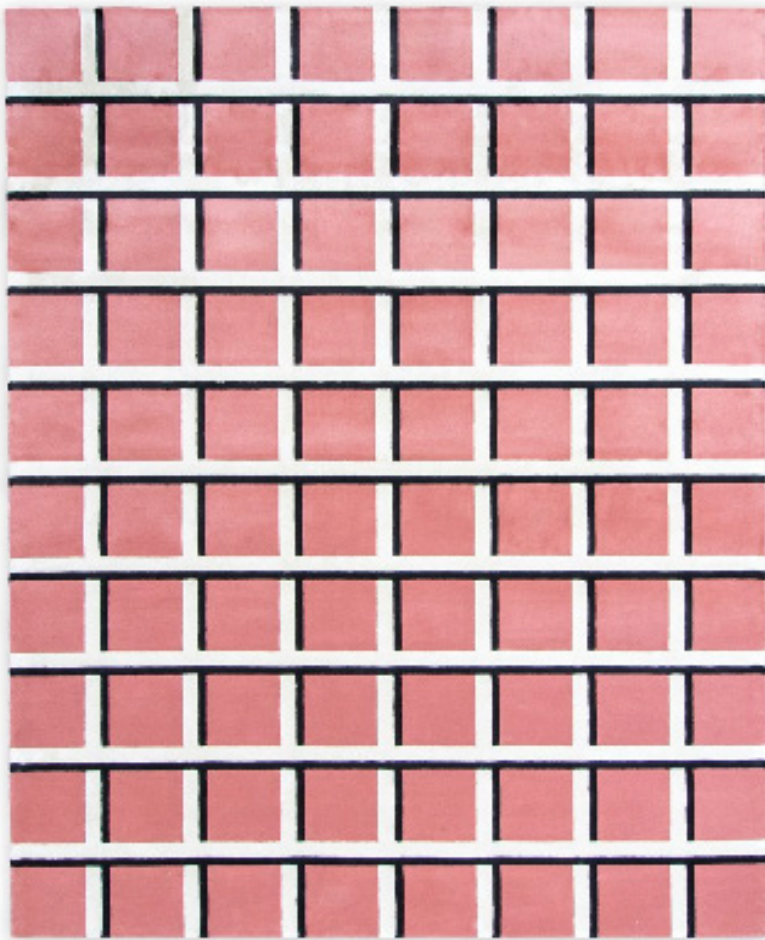


Scarpa's Window

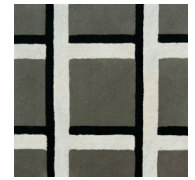
hand tufted



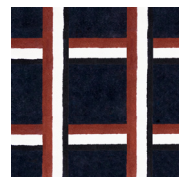
Melon



Rust



Sage



Navy

Technical Specifications

Content:	90% thin wool / 10% tencel
Construction:	hand tufted
Type:	wool & tencel cut pile
Backing:	polyester
Traffic:	commercial
Pile Height:	1/2" nom.
Weight:	12 oz/sf nom.
Max width:	24'-6"
Max length:	32'-9"
Pattern repeat:	9.5" nom
Flammability:	Passes Pill Test for flammability, FF-170 Compliant with CDPH (CA Section) Ver. 1.2
Design:	Copyright 2019, Tali Roth
Colorways:	Four, all designs are customizable in color & scale
Standard size(s):	6'-0" x 9'-0" 8'-0" x 10'-0" 9'-0" x 12'-0" 12'-0" x 15'-0"

Variations in size +/- 2% are inherent to hand tufted products.