

Beekman

hand woven, wool and jute



Salt

Technical Specifications:

Content:	85% wool / 15% jute
Construction:	Hand woven
Type:	Flatweave
Backing:	Latex backing on rugs over 6'-0" wide
Traffic:	Residential
Pile Height:	1/4" nom.
Weight:	10 oz/sf nom.
Max width:	15'-2"
Max length:	n/a
Pattern repeat:	None
Testing:	Passes Pill Test for flammability, FF-170
Made in:	Portugal

Variations in size +/- 5% are inherent to hand woven products.
Dyelot variations may occur.



Salt



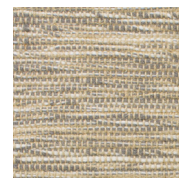
Brown Sugar



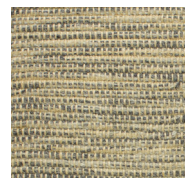
Sky



Summer



Dark Stone



Graphite



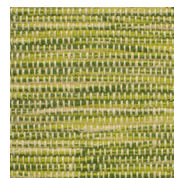
Black



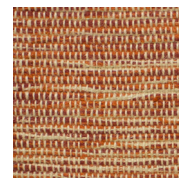
Bee



Squash



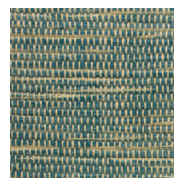
Lichen



Campfire



Malbec



Niagara



Denim



Navy