

Chelsea

hand tufted, tencel and wool



Basalt

Technical Specifications:

Content:	50% wool / 50% tencel
Construction:	Hand tufted
Type:	Tencel cut pile, wool loop pile
Backing:	Polyester
Traffic:	Light commercial and residential If castor chairs are used, this carpet should be protected locally with chair mats.
Pile Height:	1/2" nom.
Weight:	20 oz./sf nom.
Max width:	24'-6", Ribs parallel to the width
Max length:	32'-9"
Pattern repeat:	0'-0" wide x .25" long
Testing:	Passes Pill Test for flammability, FF-170 Compliant with CDPH (CA Section) ver. 1.2
Made in:	Portugal

Variations in size +/- 2% are inherent to hand tufted products.
Dyelot variations may occur.



Basalt



Petal



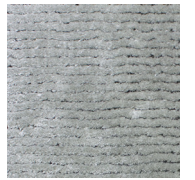
Cumulus



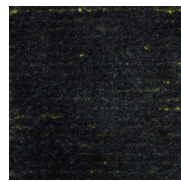
Bisque



Oak



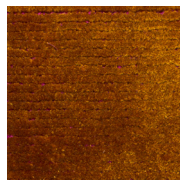
Grey



Tarnish Silver



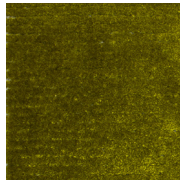
Peat



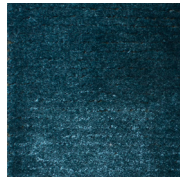
Fiesta



Zinnia



Cactus



Tuscan



Currant