

Cobble Hill

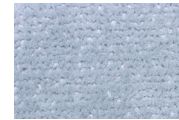
hand tufted, tencel and wool



Polar Bear



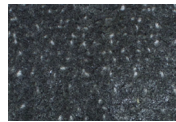
Polar Bear



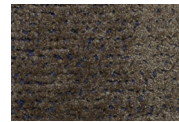
Silver Fox



Reindeer



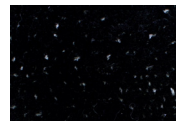
Otter



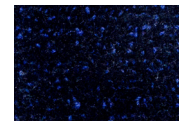
Antelope



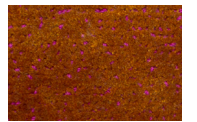
Sea Lion



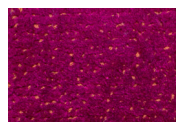
Mink



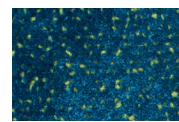
Panther



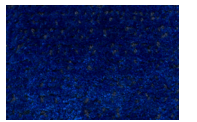
Fire Opal



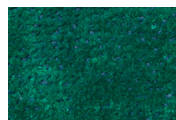
Pink Ruby



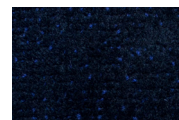
Aquamarine



Sapphire



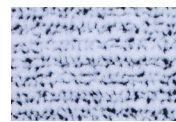
Emerald



Blue Onyx



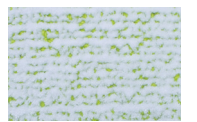
Taffy



Licorice



Jujube



Pistachio



Gumdrop

Technical Specifications:

Content:	50% wool / 50% tencel
Construction:	Hand tufted
Type:	Tencel cut pile, wool loop pile
Backing:	Polyester
Traffic:	Light commercial and residential If castor chairs are used, this carpet should be protected locally with chair mats.
Pile Height:	1/2" nom.
Weight:	18 oz/sf nom.
Max width:	24'-6"
Max length:	32'-9"
Pattern repeat:	None
Testing:	Passes Pill Test for flammability, FF-170 Compliant with CDPH (CA Section) ver. 1.2
Made in:	Portugal

Variations in size +/- 2% are inherent to hand tufted products.
Dyelot variations may occur.