

# Horatio

hand woven, wool and tencel



Sea Salt



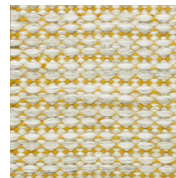
Sea Salt



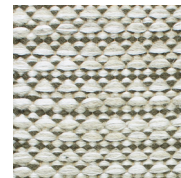
Petal



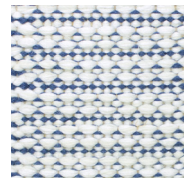
Lichen



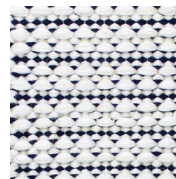
Tumeric



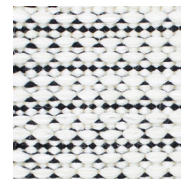
Olive



Lake



Navy



Salt & Pepper

## Technical Specifications:

Content:	90% wool / 10% tencel
Construction:	Hand woven
Type:	Flatweave
Backing:	Latex backing on rugs over 6'-0" wide
Traffic:	Residential
Pile Height:	3/8" nom.
Weight:	11 oz./sf. nom.
Max width:	16'-4", Ribs parallel to the width
Max length:	n/a
Pattern repeat:	.75" wide x .875" wide
Testing:	Passes Pill Test for flammability, FF-170
Made in:	Portugal

Variations in size +/- 5% are inherent to hand woven products.  
Dyelot variations may occur.