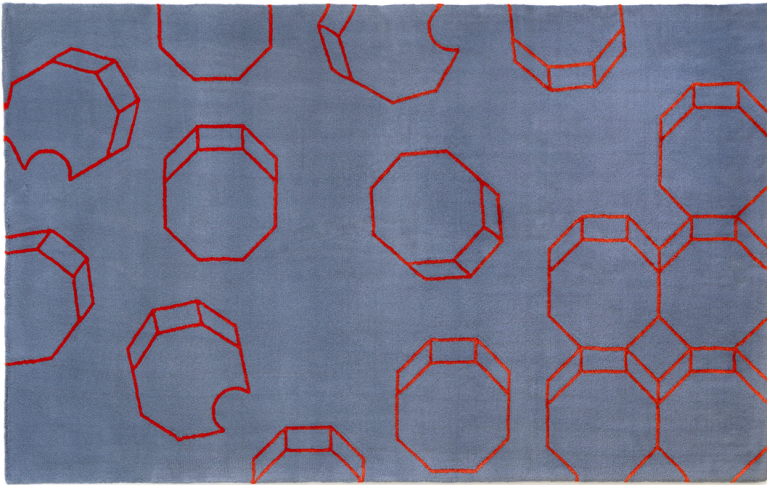
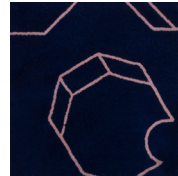


Tribeca

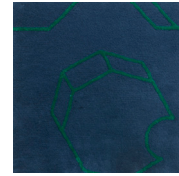
hand tufted, thin wool and tencel



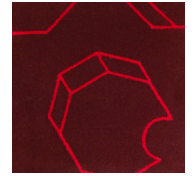
Moody Blue



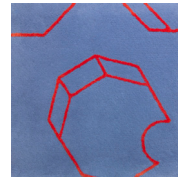
Dark Blue



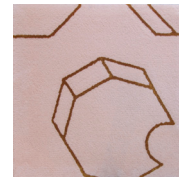
Emerald



Deep Red



Moody Blue



Blush

Technical Specifications:

Content:	90% wool / 10% tencel
Construction:	Hand tufted
Type:	Cut pile
Backing:	Polyester
Traffic:	Commercial and residential If castor chairs are used, this carpet should be protected locally with chair mats.
Pile Height:	1/2" nominal
Weight:	20 oz/sf nom.
Max width:	24'-6"
Max length:	32'-9"
Pattern repeat:	n/a
Testing:	Passes Pill Test for flammability, FF-170 Compliant with CDPH (CA Section) Ver. 1.2
Design:	Tribeca, Copyright 2018, Ghislaine Viñas
Colorways:	Five, all designs are customizable in color & scale
Standard size(s):	6'-0" x 9'-0" 9'-0" x 12'-0" 6'-0" round 9'-0" round
Made in:	Portugal

Variations in size +/- 2% are inherent to hand woven products.
Dyelot variations may occur.