

# Vinegar Hill

hand woven, wool



Grey Natural



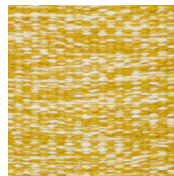
Grey Natural



Oats



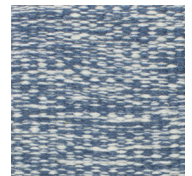
Shell Pink



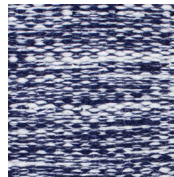
Curry



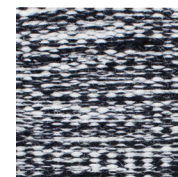
Pistachio



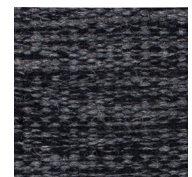
Lake



Navy



Salt & Pepper



Charcoal

## Technical Specifications:

Content:	100% wool
Construction:	Hand woven
Type:	Flatweave
Backing:	Latex backing on rugs over 6'-0" wide
Traffic:	Commercial and residential If castor chairs are used, this carpet should be protected locally with chair mats.
Pile Height:	5/16" nom.
Weight:	11 oz/sf nom.
Max width:	16'-4", Striae parallel to the width
Max length:	n/a
Pattern repeat:	None
Testing:	Passes Pill Test for flammability, FF-170 Compliant with CDPH (CA Section) Ver. 1.2
Made in:	Portugal

Variations in size +/- 5% are inherent to hand woven products.  
Dyelot variations may occur.