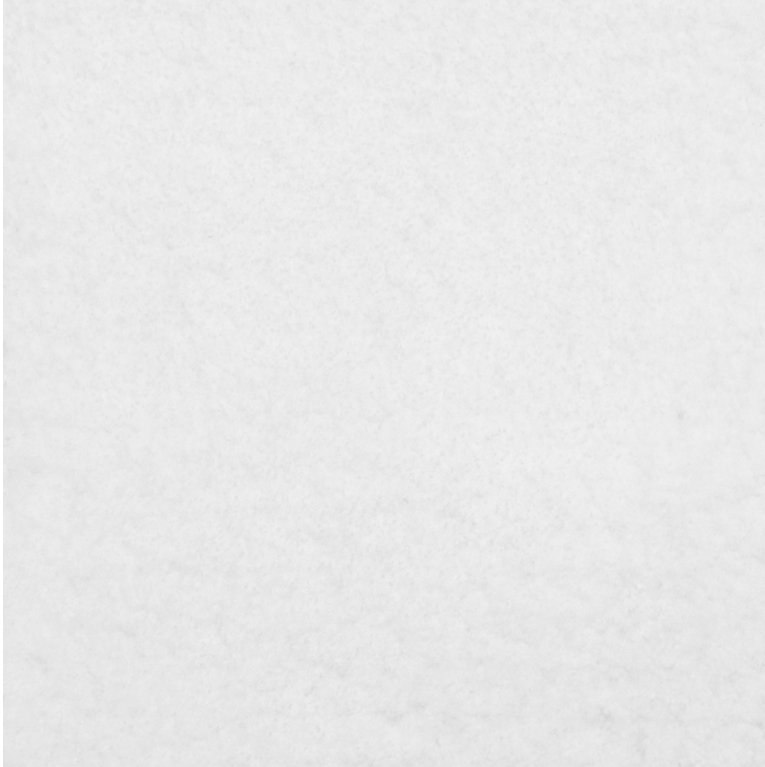


Lexington

hand tufted, tencel



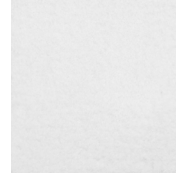
Star

Technical Specifications:

| | |
|-----------------|---|
| Content: | 100% tencel |
| Construction: | Hand tufted |
| Type: | Tencel cut pile |
| Backing: | Polyester |
| Traffic: | Light commercial and residential If castor chairs are used, this carpet should be protected locally with chair mats. |
| Pile Height: | 1/2" nom. |
| Weight: | 18 oz/sf nom. |
| Max width: | 24'-6" |
| Max length: | 32'-9" |
| Pattern repeat: | None |
| Testing: | Passes Pill Test for flammability, FF-170 Compliant with CDPH (CA Section) ver. 1.2 Passes Radiant Panel Test, Class II |
| Made in: | Portugal |

Variations in size +/- 2% are inherent to hand tufted products.
Dyelot variations may occur.

*ADA compliant version available with 12mm pile height and eased edges.



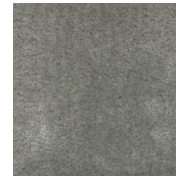
Star



Pumice



Sesame



Silver Grey



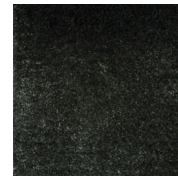
Nickel



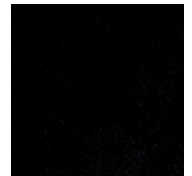
Pebble



Phantom



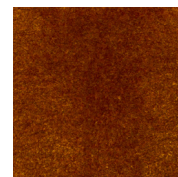
Shadow



Black Pearl



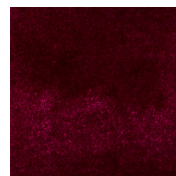
Old Brass



Firelight



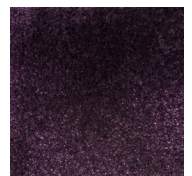
Peony



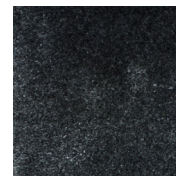
Fuschia



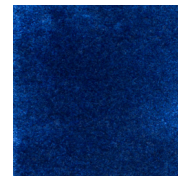
Deep Blue



Amethyst



Anthracite



Snorkel



Indigo