

Fort Greene

hand tufted, thin wool



Stucco

Technical Specifications:

Content:	100% thin wool
Construction:	Hand tufted
Type:	Thin wool cut pile
Backing:	Polyester
Traffic:	Commercial and residential If castor chairs are used, this carpet should be protected locally with chair mats
Pile Height:	1/2" nom.
Weight:	18 oz/sf nom.
Max width:	24'-6"
Max length:	32'-9"
Pattern repeat:	None
Testing:	Passes Pill Test for flammability, FF-170 Compliant with CDPH (CA Section) Ver. 1.2 Passes Radiant Panel Test, Class 1 Portugal

Variations in size +/- 2% are inherent to hand tufted products.
Dyelot variations may occur.

*ADA compliant version available with 12mm pile height and eased edges.



Stucco



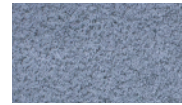
Driftwood



Shell Pink



Platinum



Silver



Bisque



Balsa



Satinwood



Straw



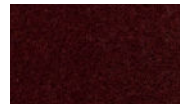
Squash



Wood



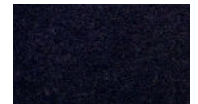
Siena



Terra



Garnet



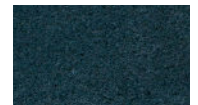
Parma



Ink



Pale Sky



Lake



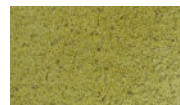
Petrol



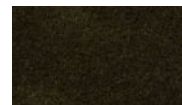
Caspian



True Blue



Lichen



Forest Floor



Emerald