

Beekman

hand woven, wool and jute

rev. 10/18/24



Salt

Technical Specifications:

Content: 85% wool / 15% jute
 Construction: Hand woven
 Type: Flatweave
 Backing: Latex backing on rugs over 6'-0" wide
 Traffic: Residential
 Pile Height: 1/4" nom.
 Max width: 18'-0"
 Max length: n/a
 Made in: India

Variations in size +/- 5% are inherent to hand woven products.
 Dyelot variations may occur.



Salt



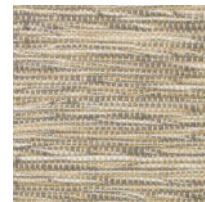
Brown Sugar



Sky



Summer



Dark Stone



Graphite



Black



Bee



Squash



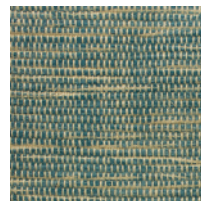
Lichen



Campfire



Malbec



Niagara



Denim



Navy