

Vinegar Hill

hand woven, wool

rev. 10/18/24



Grey Natural

Technical Specifications:

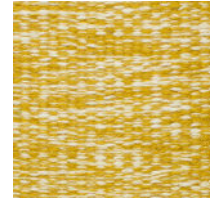
Content:	100% wool
Construction:	Hand woven
Type:	Flatweave
Backing:	Latex backing on rugs over 6'-0" wide
Traffic:	Commercial and residential
Pile Height:	5/16" nom.
Max width:	18'-0"
Max length:	45'-0"
Made in:	India



Oats
NW103, ARS-4M01



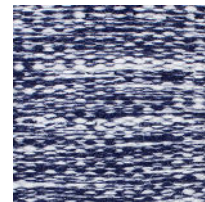
Grey Natural
NW104, ARS-4M01



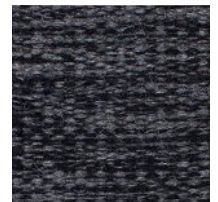
Curry
ARS-3J06, ARS-4M01



Lake
ARS-2K03, ARS-4M01



Navy
ARS-2I18, ARS-4M01



Charcoal
NW105, ARS-3B01



Lapin
ARS-4L18, ARS-4M01



Squirrel
ARS-4K18, ARS-4M01



Samovar
ARS-3J16, ARS-4M01



Tuberoze
ARS-2C03, ARS-4M01



Madrona
ARS-2G03, ARS-4M01

Variations in size +/- 5% are inherent to hand woven products.
Dyelot variations may occur.